

**coupang**

# OpenAPI Workflow

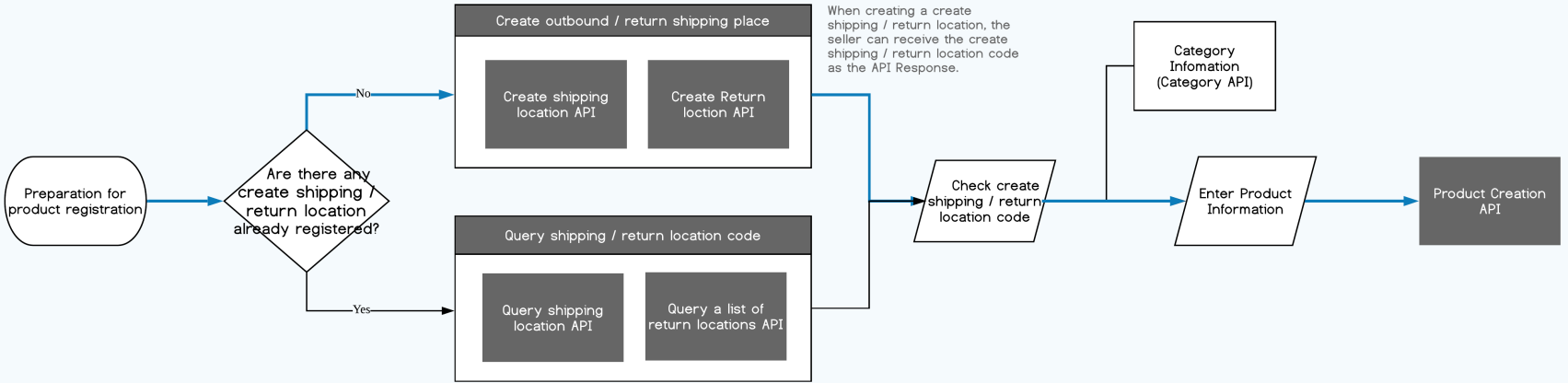
**Seller Technical Support Team**

# Logistics API Workflow

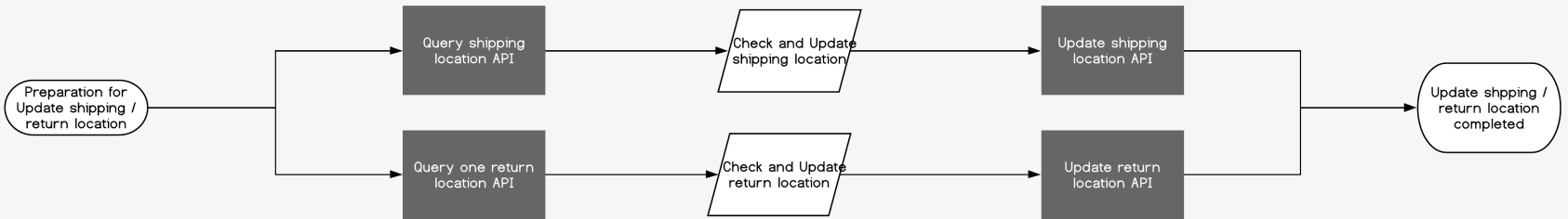
→ : General Flow

Seller

## [ A. Register product using create shipping / return location ]

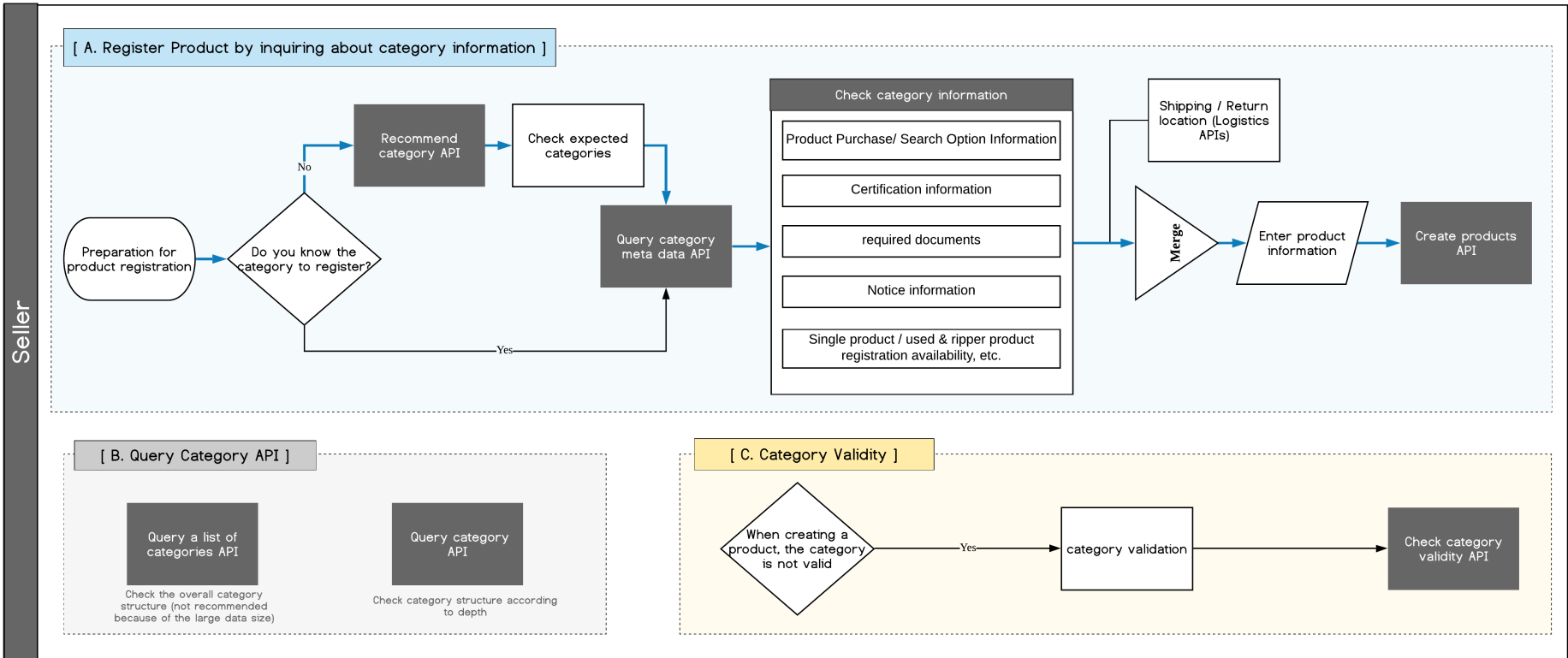


## [ B. Update shipping / return location ]



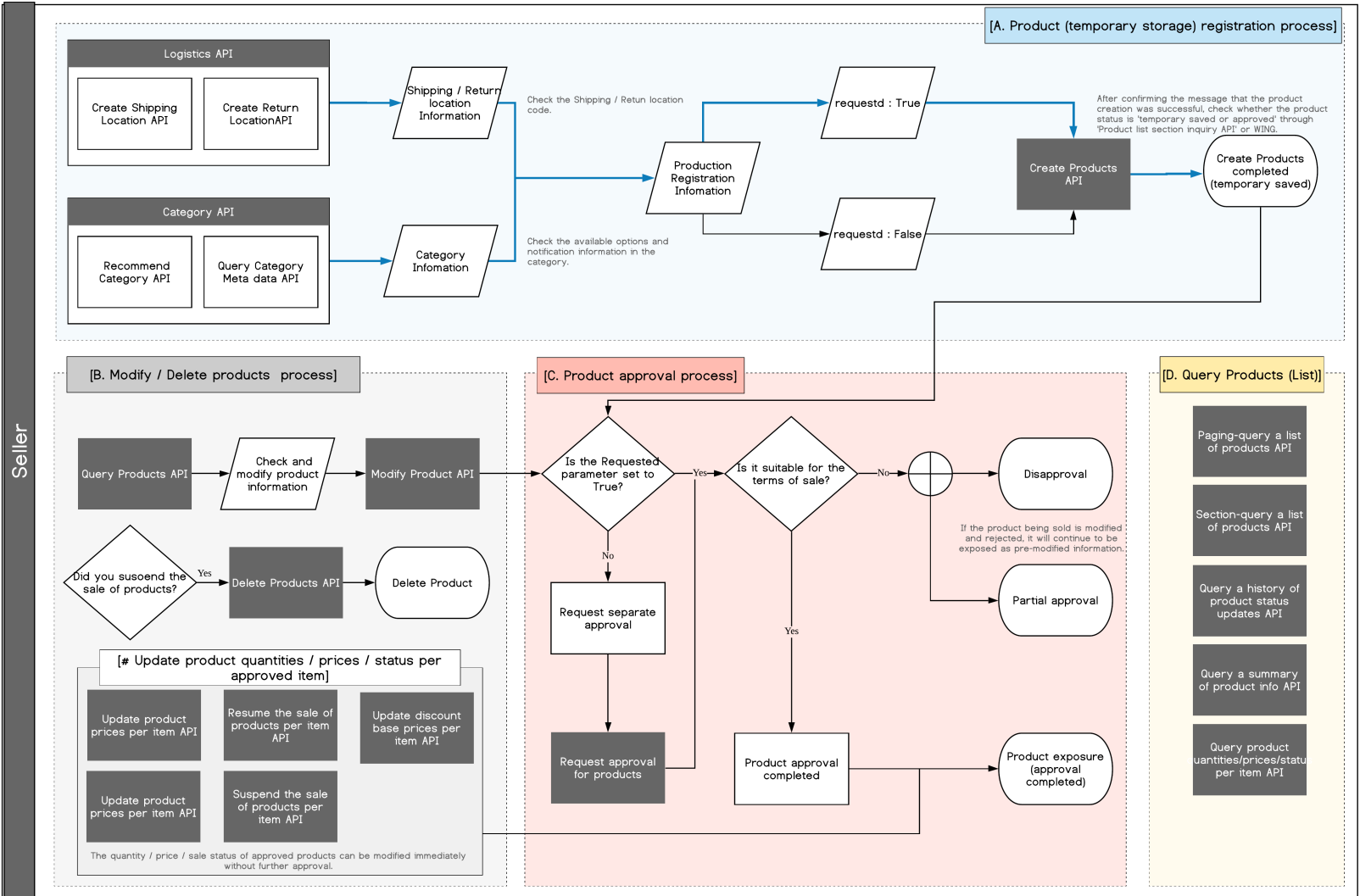
# Category API Workflow

→ : General Flow



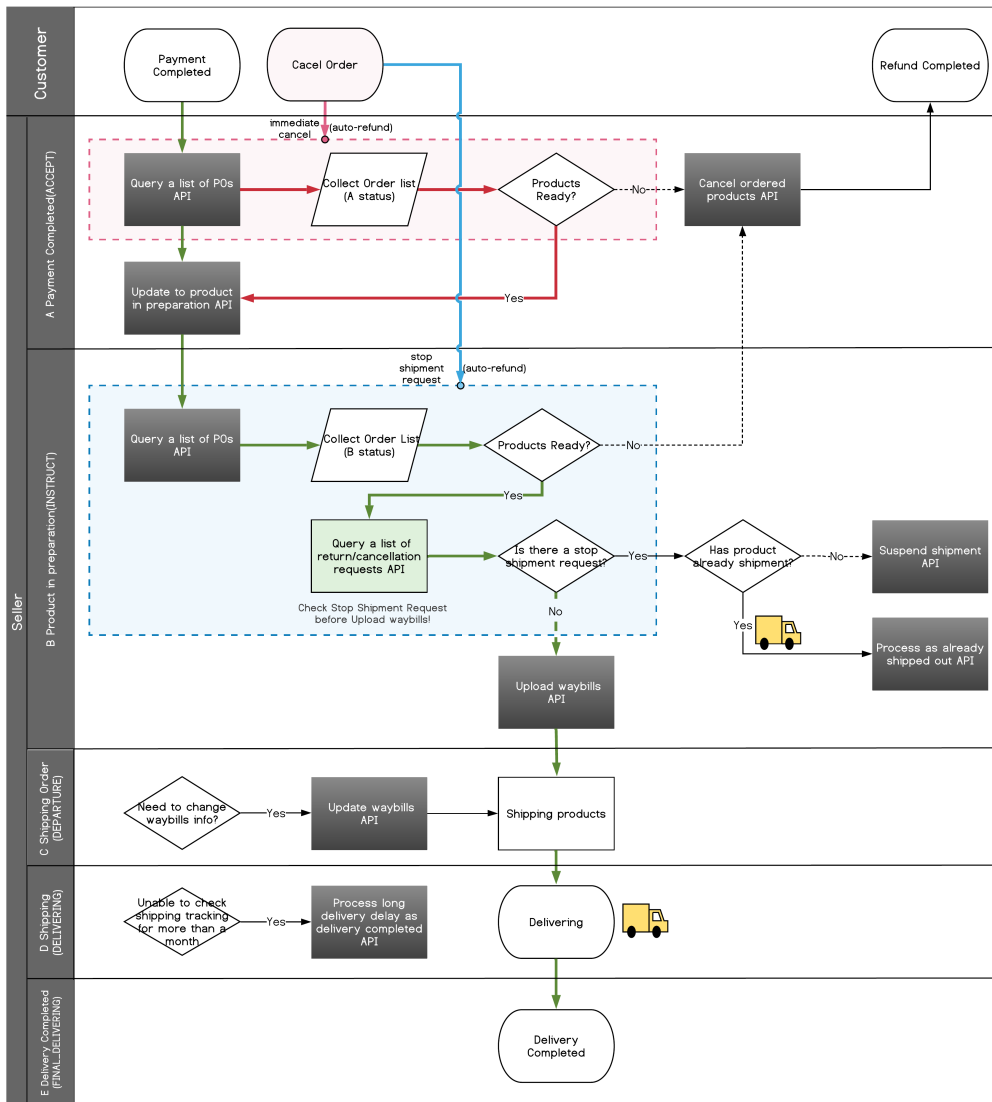
# Product API Workflow

→ : General Flow



# Shipment/Refund API Workflow

Mandatory Optional



Need to query lists of cancelled immediately orders in payment completed status?

Query a list of return/cancellation requests API

Need to query specific shipping status history?

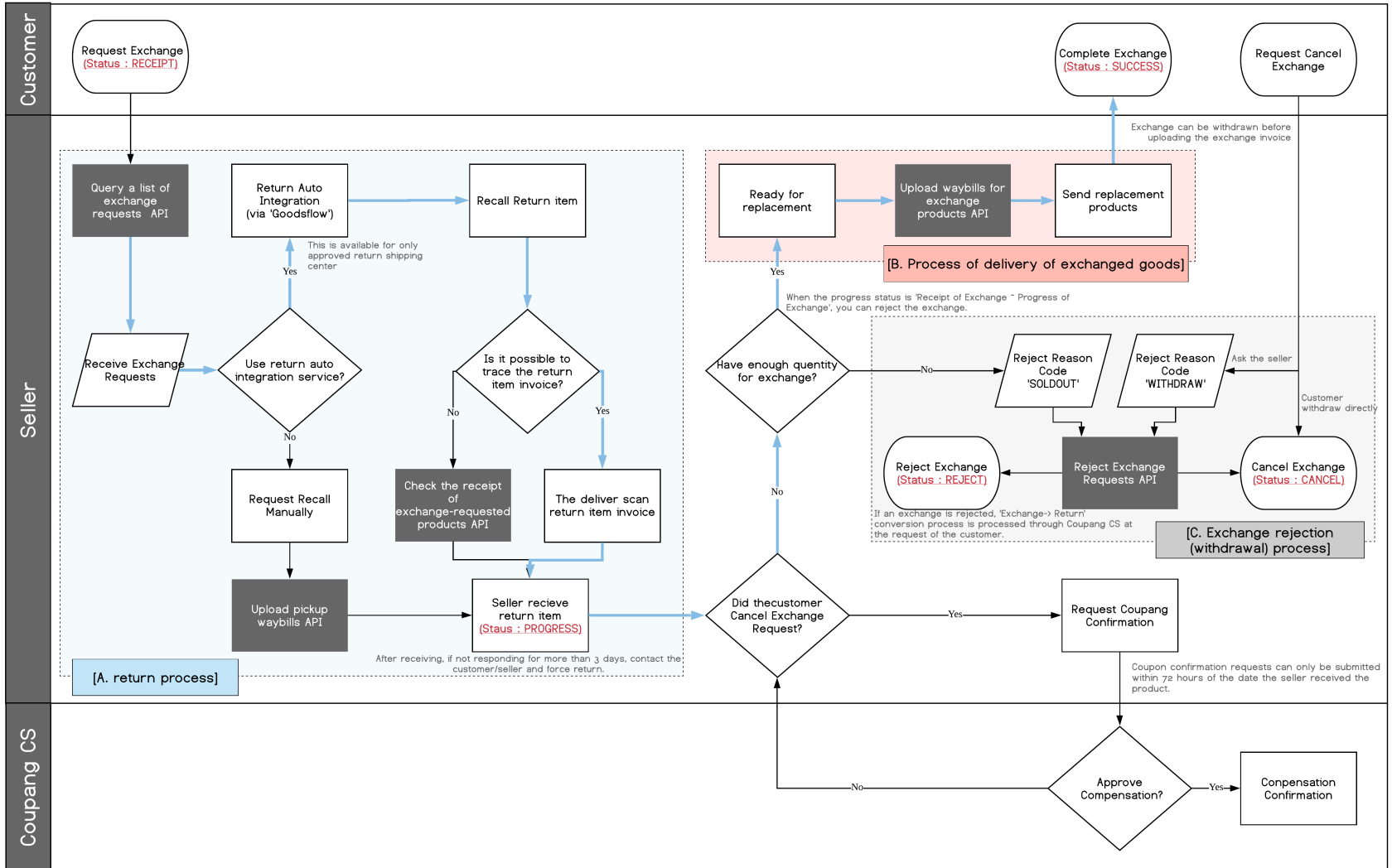
Query a history of delivery status updates API

Need to query specific one order?

Query one PO API (shipmentBoxId, orderId)

# Exchange API Workflow

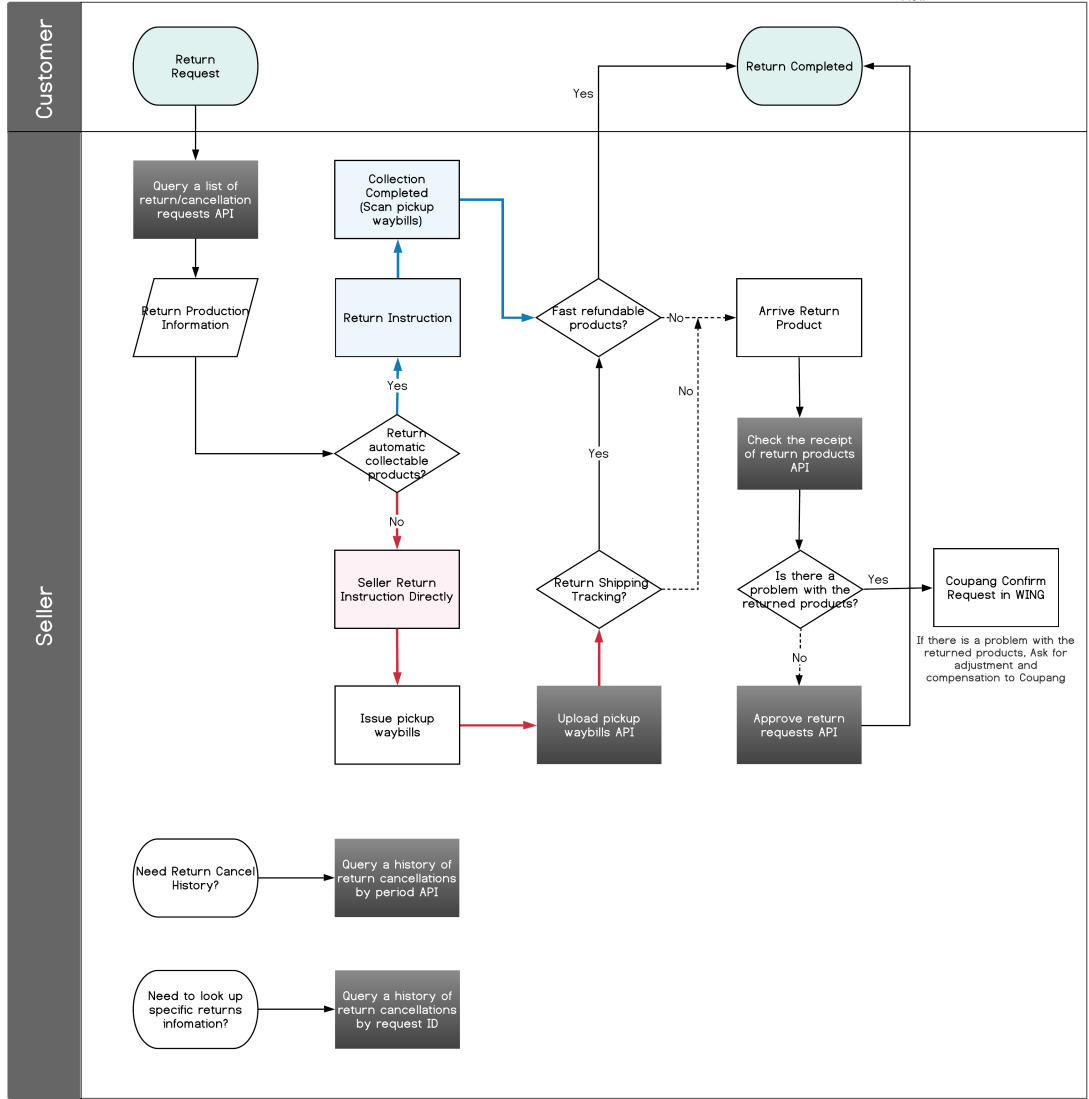
→ : General Flow



# Return API Workflow

Return automatic collection Flow →

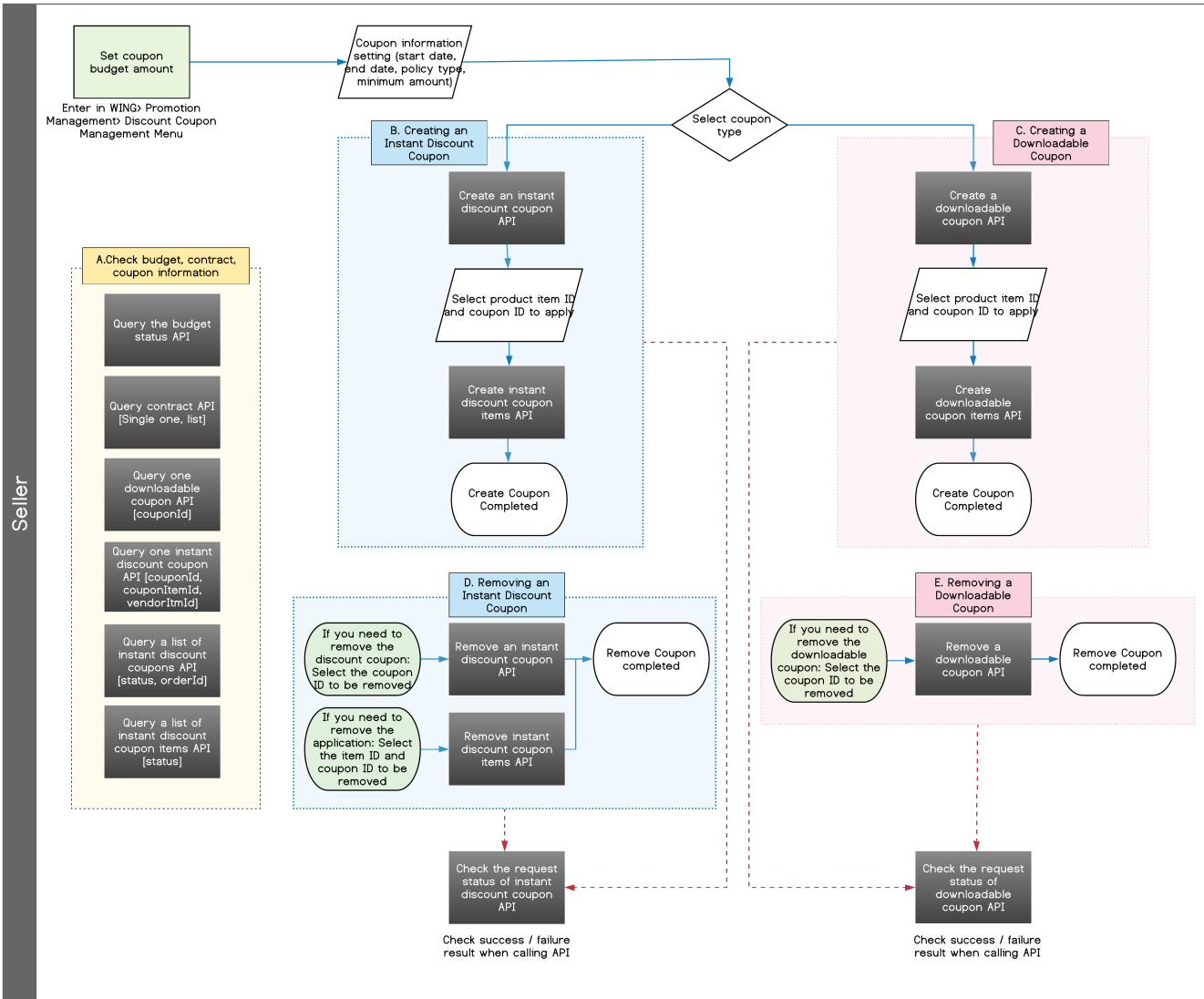
Seller Return Collection directly Flow →



# Coupon API Workflow

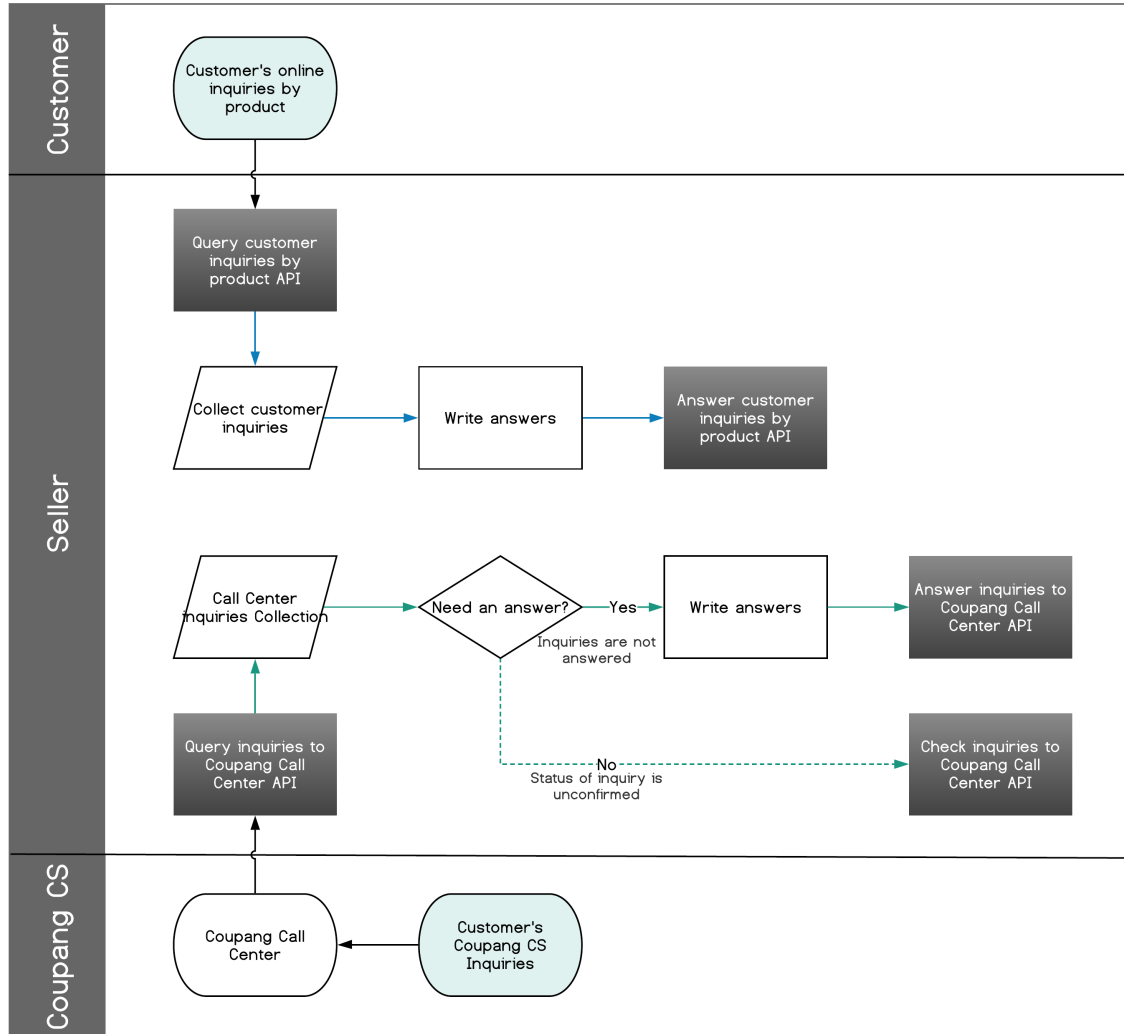
—> : General flow

- - -> : Checking API call results





# CS API Workflow



# Settlement API Workflow

Seller

When you need to check the detailed sales history, such as product sales and shipping cost sales

Query sales details API

If you need to check the payment history confirmed or scheduled based on the sales recognition month

Query payment details API